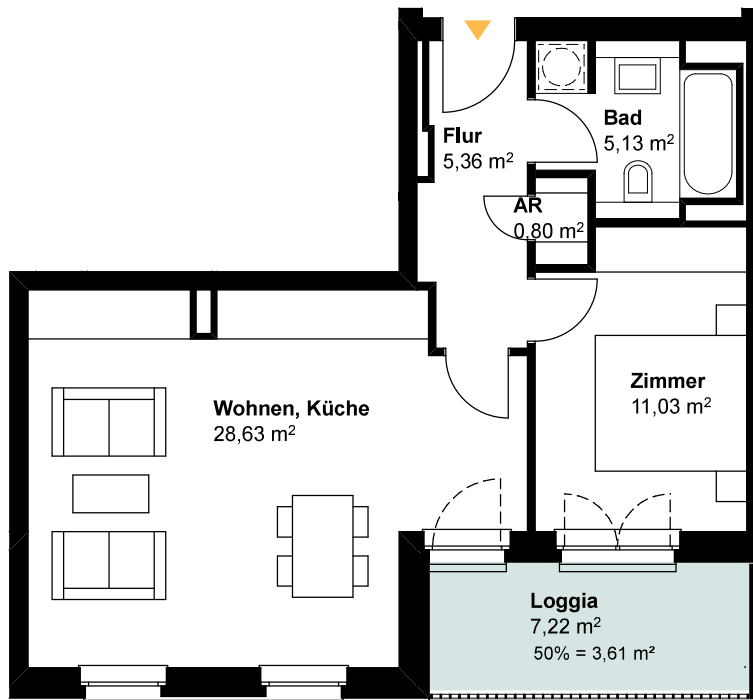


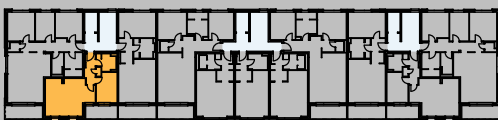
Treppenhaus 1



M.1:100

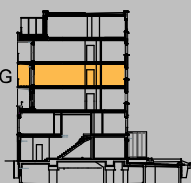


WE 3.2
3.OG



Übersicht M.1:1000

3.OG



2-Zi. Wohnung

| | | |
|---------------|------|----------------------|
| Zimmer | 100% | 11,03 m ² |
| Wohnen, Küche | 100% | 28,63 m ² |
| Bad | 100% | 5,13 m ² |
| Flur | 100% | 5,36 m ² |
| Abstellraum | 100% | 0,80 m ² |
| Loggia | 50% | 3,61 m ² |

Wohnfläche Gesamt

54,56 m²