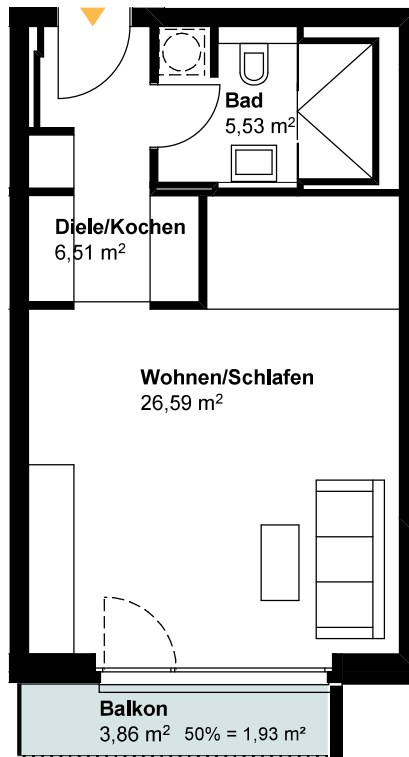


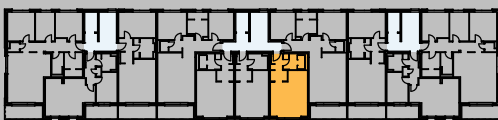
Treppenhaus 2



M.1:100

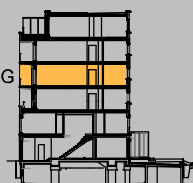


WE 3.7
3.OG



Übersicht M.1:1000

3.OG



1-Zi. Wohnung

Wohnen, Schlafen	100%	26,59 m ²
Bad	100%	5,53 m ²
Diele, Kochen	100%	6,51 m ²
Balkon	50%	1,93 m ²

Wohnfläche Gesamt 40,56 m²